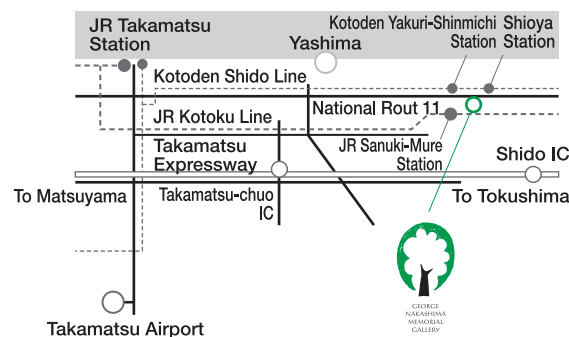


**George Nakashima, a master craftsman
who loved trees, nature and his family
from the bottom of his heart**



photo by Osamu Murai

Throughout his life, George Nakashima preferred to be called a 'craftsman of wood', rather than a designer. He was the son of Japanese immigrants and grew up in Seattle, studying both forestry and then architecture in college. He worked as an architect for several years, but grew frustrated with the state of modern architecture in the United States, and chose the path of furniture design where he would have full control over the process. He acquired some virgin forest in New Hope, Pennsylvania, and built himself a studio there, to begin producing pieces that highlighted the beauty of the raw wood. With simple, yet intelligent design, and composition that played off the wood's inherent structures, he quickly made a name for himself throughout the world as a furniture designer of note. In 1964, he first came to Takamatsu on the recommendation of the sculptor, Masayuki Nagare. It was there that he found out about and joined the Sanuki Mingu Federation, a movement that was formed to give new life to and refine new shapes within the tradition of folk furniture that had been passed along from person to person and used since ancient times. In addition, with the cooperation of Sakura Seisakusho, 1968 saw the first of what became eight George Nakashima exhibits to be held in Tokyo, which actively widened his appeal. After his death in 1990, his furniture designs continue to be made at his studio in New Hope and at Sakura Seisakusho in Takamatsu. Even now the pulse of his creative spirit lives on.



Address: 1132-1 Omachi, Mure-cho, Takamatsu City,
Kagawa Prefecture 761-0122

| | |
|-------------------------------|--|
| Transport Access | 25 min. by car from JR Takamatsu Station |
| | 10 min. by car from Shido IC on the Takamatsu Expressway |
| | 20 min. by car from Takamatsu-chuo IC on the Takamatsu Expressway |
| | 40 min. by car from Takamatsu Airport |
| | 5 min. on foot from Shioya Station on the Kotoden Shido Line |
| | 8 min. on foot from Yakuri-Shinmichi Station on the Kotoden Shido Line |
| | 8 min. on foot from Sanuki Mure Station on the JR Kotoku Line |
| Parking | Parking is available for private cars |
| Hours | 10:00 a.m. to 5:00 p.m. (last admissions at 4:30 p.m.) |
| Holidays | National Holidays, Summer Season, Year-end Holidays |
| Reservation System | Advanced reservation required for Sundays and group visits Please either call or use the form below to make a reservation |
| Admission | General admission: ¥500 Elementary and junior high school students: ¥200 (group discounts available) |

George Nakashima Memorial Gallery

1132-1 Omachi, Mure-cho,
Takamatsu City, Kagawa Prefecture 761-0122
TEL: 087-870-1020 FAX: 087-845-2829
Website: <http://www.sakurashop.co.jp/nakashima/>

Aji • Mure • Yashima

ART VILLAGE



ジョージナカシマ 記念館

GEORGE NAKASHIMA MEMORIAL GALLERY



Welcome to the George Nakashima Memorial Gallery

This gallery is a memorial to the life of Japanese-American furniture designer, George Nakashima, so that more people can learn through his works about his philosophy and way of thinking about craftsmanship. This memorial gallery was established in commemoration of the sixtieth anniversary of the founding of Sakura Seisakusho (Sakura Wood Workers), which as the only workshop in the world recognized for its craftsmanship by Nakashima, has collaborated extensively with him. Aside from his studio in New Hope, Pennsylvania, this gallery is an invaluable site like no other in the world where you can see his incredible works of art. George Nakashima is a key furniture designer of the twentieth century. His designs are well-known around the world for his abilities to maximize the beauty of his materials. More than anything, he loved nature, he loved working with wood and he also loved his family. It's very possible to imagine him there in his studio in New Hope, surrounded as it is by a deep forest. When we look at his works through which he carried out his lifelong pursuit of ideals such as Start with the wood, Know the wood, Read the heart of the wood, and Communicate with the wood, we can experience his modest and straightforward stance towards craftsmanship.

The furniture designed by George Nakashima offers you the chance to experience the beauty refined through Nakashima's unique philosophy and aesthetics, while soaking in the warmth of the wood and the wonder of nature. Please stay as long as you can.

The studio in New Hope, Pennsylvania, nestled deep in the woods



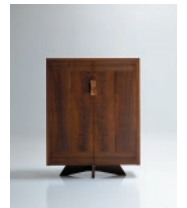
(1st Floor)

- Reception Desk
- Hall
- Gallery Shop
- Tea Lounge



(2nd Floor)

- Panel Display about George Nakashima
 - Exhibition Room 1
 - Chairs
 - Showroom models
- Exhibition Room 2
 - Tables
 - Cabinets



Relax as you experience Nakashima furniture for yourself.

By now you probably want to get much closer to the furniture of George Nakashima. We welcome you to join us in the Tea Lounge on the first floor. Have a seat in a Nakashima chair as you enjoy your tea and experience its true comfort and pedigree. This is the place where you can truly see the unique qualities of Nakashima design and how he maximizes the inherent beauty of the wood.

